



5-Year Plan (2014 to 2019)

Central Klickitat Conservation District

For More Information Contact: Jim E. Hill, Mgr, 509.773.5823, klickcon@gorge.net



Organization of the Central Klickitat Conservation District

A political subdivision of the State of Washington – authorities, powers and structure contained in RCW 89.08.

- Established in 1946, CKCD has a full and varied history of conservation in Klickitat County. Our ultimate goal has always been and continues to be, cooperation with landowners to provide the most on-the-ground conservation for the dollars spent. As conservation practices progress, we have adopted the new technology to provide the best in conservation to our constituents.

Function of the Central Klickitat Conservation District

- To take available technical, financial and educational resources, whatever their source, and focus or coordinate them so that they meet the needs of the local land manager with conservation of soil, water and related natural resources.

We Serve & Why

- Landowners and people between the Klickitat River and Rock Creek in Klickitat County with natural resource problems and concerns, individuals and groups that want to make a difference in conservation. Our goal is to improve, conserve and wisely use natural resources by providing technical assistance, by sharing in the cost of natural resource improvements, and providing BMP's to help prevent or solve regulatory actions.

Mission of the Central Klickitat Conservation District

- The mission of the Central Klickitat CD is to improve, conserve and promote the wise use of natural resources by serving citizens within the CKCD through educational programs, public information, technical advice, and financial assistance.

Vision of the Central Klickitat Conservation District

- Become fiscally self sustaining and be able to continue to improve the quality of technical assistance and financial assistance to land users.

Values of the Central Klickitat Conservation District

We believe in:

- Treating everyone equitably and in a positive manner.
 - Being frugal with funds.
 - Not being intrusive on private land rights.
 - Implementing successful and beneficial projects.
 - Saying what we are going to do - and doing what we say.
 - Informing people so they understand landowner commitments and the CD obligations to conservation efforts.
 - Good locally led grass roots conservation.
 - Not being a regulatory agency – nor do we intend to be.
 - Wise use of natural resources.
 - Cooperative, incentive based programs.
 - Assisting landowners in being proactive with natural resource issues.
 - Helping land users comply with regulatory conservation efforts.
 - Partnership agreements with governmental agencies.
 - Sustaining the agro-forestry environment in Klickitat County.
-

Natural Resource Data & Information
See Appendix A

Priority Natural Resource Conservation Needs & Geographic Areas, Measures of Success and Goals

Priority Natural Resource Conservation Need	Geographic Area
Farmland Preservation & Agro-forestry Culture Maintained	District wide MOA with EKCD
Water Quality	District wide: Swale Creek and Little Klickitat TMDL's
Information & Technology Transfer (emphasis on small acreage outreach)	District wide
Forest Health & Wildfire Protection)	District wide
Rangeland Management & Wildfire Protection	Anything not in trees
Soil Quality / Erosion	Klickitat Valley & Pleasant Valley
Water Quantity (wet & paper)	High Prairie, Swale and Little Klickitat
Energy Conservation (Nat Resource Lands)	District wide
Wildlife Habitat	District wide
Weed Control & Pest Control	District wide
Funding & District Operations (in all the above)	District wide

Natural Resource Conservation Need	Measures of Success	Goal
<i>Farmland Preservation & Agro-forestry Culture Maintained</i>	<ul style="list-style-type: none"> • # of contracts • # of applicants 	<i>By Dec 2019 have a demonstrated increase in the number of applicants and a corresponding number of contracts signed for farmland preservation</i>
<i>Water Quality</i>	<ul style="list-style-type: none"> • # of practices applied • Water quality measurements 	<i>By Dec 2019 have a demonstrated increase in the number of practices applied and related water quality measurements improved</i>
<i>Information & Technology Transfer (emphasis on small acreage outreach)</i>	<ul style="list-style-type: none"> • # of activities held and participation • # of new people assisted • # of people implementing new practices • # and type of demonstration areas 	<i>By Dec 2019 have a demonstrated increase in the number of activities held and participation; number of new people assisted; number of people implementing new practices; number and type of demonstration areas</i>
<i>Forest Health & Wildfire Protection</i>	<ul style="list-style-type: none"> • Acres treated • # of people assisted • # of new practices installed 	<i>By Dec 2019 have a demonstrated increase in the number of people assisted; new practices installed and related acres treated</i>
<i>Rangeland Management & Wildfire Protection</i>	<ul style="list-style-type: none"> • Acres treated • # of people assisted • # of new practices installed 	<i>By Dec 2019 have a demonstrated increase in the number of people assisted; the number of acres treated and the number of new practices installed</i>
<i>Soil Quality / Erosion</i>	<ul style="list-style-type: none"> • # of producers 	<i>By Dec 2019 have a demonstrated increase in the number of producers assisted; number</i>

	<i>assisted</i> <ul style="list-style-type: none"> • # of new practices • Tons of soil saved • Acres meeting a soil condition index 	<i>of new practices installed and the related tons of soil saved and acres meeting a soil condition index</i>
<i>Water Quantity (wet & paper)</i>	<ul style="list-style-type: none"> • # of people implementing water conservation measures • # of practices installed • Awareness of methods of protection of water rights • Monitoring of well levels 	<i>By Dec 2019 have a demonstrated increase in the number of people implementing water conservation measures; number of practices installed; an awareness of methods of protection of water rights and the related monitoring of well levels</i>
<i>Energy Conservation (Nat Resource Lands)</i>	<ul style="list-style-type: none"> • KWHs reduced and related efficiency and production comparison measurement • # of people assisted 	<i>By Dec 2019 have a demonstrated increase in the number of people assisted and related KWHs reduced and related efficiency and production comparison measurement</i>
<i>Wildlife Habitat</i>	<ul style="list-style-type: none"> • Population of desired species • Acres of practices installed • # of cooperators assisted 	<i>By Dec 2019 have a demonstrated increase in the acres of practices installed; number of cooperators assisted and related population of desired species;</i>
<i>Weed Control & Pest Control</i>	<ul style="list-style-type: none"> • Acres of improvement in weed control and pest control • # of land owners contacted and assisted • Weed list populations 	<i>By Dec 2019 have a demonstrated increase in the number of land owners contacted and assisted and the related acres of improvement in weed control and pest control</i>
<i>Funding & District Operations (in all the above)</i>	<ul style="list-style-type: none"> • Make a decision on office space for staff • Secure stable base funding • Acquire conservation project funding • Maintain / obtain appropriate staffing levels 	<i>By April 2014 analyze office space need and investigate options.</i> <i>By Dec. 2019 have a secure funding base, show a demonstrated increase in project funding and have appropriate staffing levels.</i>

Land Manager Needs

- Regulatory certainty...if you perform a practice to meet a standard...then would be left alone.
- Irrigation pivot installation assistance...partial.
- Make sure to look at dollars per acre served.
- A guide (person) to help navigate through available programs.
- Contact with district technical staff for assistance.

- Updates on new programs and technologies.
- Policy champion to provide emphasis on state, local and federal policies that effect land owners...effectively and efficiently use resources.
- Work with agencies regarding needing scientific background for practice standards.
- Education on land use for small acreage owners.
- Fiscal assistance for land owners/operators to try new technology, conservation practice (safety net).
- Good natural resource data and connection with landowner's interest.
- Flexibility to prescribe practices to meet local needs.
- Be a facilitator from one land owner to another on resource needs and solutions.
- Relate cost share opportunities to land owners-operators.
- Farmland preservation techniques and information.
- Good working relationships and trust.
- Producer social network established and nurtured.

Milestones, Timeline & Actions

Priority: Farmland Preservation & Agro-forestry Culture Maintained

Measurable Goal: By Dec 2019 have a demonstrated increase in the number of applicants and a corresponding number of contracts signed for farmland preservation.

Milestones	Timeline	Actions
Applications submitted	May 2016	<ul style="list-style-type: none"> • Continue dialog with OFP • Outreach to land owners to determine interest • Education of staff for process and needs for applications • Work with OFP and landowner on contract • Meet all application deadlines • Put a process in place to legally hold contract • Legal advice on draft contract
Contract signed	Sept 2017	<ul style="list-style-type: none"> • Contingent on successful application • Process and appraisal • Negotiate terms of final contract • Create a property management plan • Stewardship fund in place (funding to be determined)

Priority: Water Quality

Measurable Goal: By Dec 2019 have a demonstrated increase in the number of practices applied and related water quality measurements improved.

Milestones	Timeline	Actions
Demonstrated improvement in water quality measurements	By Oct 2016	<ul style="list-style-type: none"> • Maintain WQ monitoring program with existing sites. • Perform data analysis of stream temperature changes over distance and time.
Operate and maintain existing stream flow	Thru 2019	<ul style="list-style-type: none"> • Maintain rating curves. • Perform data management.

gage stations		<ul style="list-style-type: none"> • Collect monthly data in partnership with Klickitat County. • Make information available to the public.
BMP installation	Thru 2019	<ul style="list-style-type: none"> • Exclusion fencing and off-site watering facilities, etc., implemented. • Facilitate cost-share incentive programs for BMP installation.
Riparian Plantings	Thru 2019	<ul style="list-style-type: none"> • Continued work with students and landowners to increase stream shade long-term. • Facilitate cost-share incentive program for BMP installation.

Priority: Information & Technology Transfer (continue other information & youth education activities).

Measurable Goal: By Dec 2019 have a demonstrated increase in the number of activities held and participation; number of new people assisted; number of people implementing new practices; number and type of demonstration areas.

Milestones	Timeline	Actions
Education, Outreach, Marketing, Research and Monitoring	Yearly	<ul style="list-style-type: none"> • Determine by constituents what problems they need information on • Develop a priority of issues to address annually • Develop a list of funding sources • Update website seasonally • Monthly news articles • Enlarge newsletter mailing list • Partner with Extension and NRCS and ARS to present information regularly through news articles and on-air programs.

Priority: Forest Health & Wildfire Protection

Measurable Goal: By Dec 2019 have a demonstrated increase in the number of people assisted; new practices installed and related acres treated.

Milestones	Timeline	Actions
Identify and prioritize the problems and problem areas	Dec 2014	<ul style="list-style-type: none"> • Collaborate with the agencies and organizations involved...DNR, Forest Service, NRCS, others into an agreement
Contact the forest land owners	Dec 2014	<ul style="list-style-type: none"> • Create mailings, events, • Host public meetings • awards
Project contracts with land owners	Through 2019	<ul style="list-style-type: none"> • Contacting land owners • Presenting program • Develop and sign contract when needed
Firewise community wide protection plans	Through 2019	<ul style="list-style-type: none"> • Obtain funding

and wildfire interface program		
--------------------------------	--	--

Priority: Rangeland Management & Wildfire Protection

Measurable Goal: By Dec 2019 have a demonstrated increase in the number of people assisted; the number of acres treated and the number of new practices installed.

Milestones	Timeline	Actions
rangeland conservation plans	Dec 2019	<ul style="list-style-type: none"> Development of conservation plans with flexibility and management objectives with increase in acreage treated
practice implementation and effectiveness (native species abundant)	Dec 2019	<ul style="list-style-type: none"> Provide technical assistance and cost share for implementation of BMPs
25% of ranchers with knowledge of conservation practices and programs	Through Dec 2019	<ul style="list-style-type: none"> Increase the knowledge of conservation practices and programs

Priority: Soil Quality / Erosion

Measurable Goal: By Dec 2019 have a demonstrated increase in the number of producers assisted; number of new practices installed and the related tons of soil saved and acres meeting a soil condition index.

Milestones	Timeline	Actions
10 producers implement practices	Dec 2019	<ul style="list-style-type: none"> Increase producers contact, knowledge and related practice implementation Identify successful producers using erosion control practices Recognizing the producers at regular district meeting Meet with County road department leaders to request information on erosion and or sedimentation occurring along roadside Outreach to landowners in areas threatened with development regarding purchase of development rights.

Priority: Water Quantity

Measurable Goal: By Dec 2019 have a demonstrated increase in the number of people implementing water conservation measures; number of practices installed; an awareness of methods of protection of water rights and the related monitoring of well levels.

Adds:

- Protect ag water rights
- Use of trust water right program
- Support use of water banking
- Examine the aquifer recharge opportunities

Milestones	Timeline	Actions
Continue stream flow monitoring	Dec 2019	<ul style="list-style-type: none">• Maintain stream flow and well sounding programs,
Examine ways to utilize water banking	Dec 2019	<ul style="list-style-type: none">• implement irrigation efficiency projects• improve ability to utilize water banking
Cost share for irrigation efficiencies	Dec 2019	<ul style="list-style-type: none">• Identify projects and landowner interest for irrigation efficiency upgrades• Seek funding for irrigation efficiencies• Offer cost share for irrigation efficiencies

Priority: Energy Conservation

Measurable Goal: By Dec 2019 have a demonstrated increase in the number of people assisted and related KWHs reduced and related efficiency and production comparison measurement.

Milestones	Timeline	Actions
KWHs reduced and related efficiency and production comparison measurement # of people assisted	Dec 2019	<ul style="list-style-type: none">• By Dec 2019 have a demonstrated increase in the number of people assisted and related KWHs reduced and related efficiency and production comparison measurement

Priority: Wildlife Habitat

Measurable Goal: By Dec 2019 have a demonstrated increase in the acres of practices installed; number of cooperators assisted and related population of desired species.

Adds

- Mitigation needs and use of funding
- Look at sectioning for program delivery
- Examine what partnerships we can develop for habitat corridors
- Look at effected land owners and find out what services and needs are

Milestones	Timeline	Actions
Determine need.	On-going	<ul style="list-style-type: none">• Ask DFW, USFW, Yakama Tribe, DNR, BLM and basin affected landowners (partners) about wildlife and fish needs.

		<ul style="list-style-type: none"> Identify affected landowners, contact agencies for information and data, send mailings, hold information meetings, involve partners
Quantity or Quality of Habitat	On-going	<ul style="list-style-type: none"> Fence runs / hedgerows. Runoff pond collections. Habitat cover, flyways. Shade, variety of structure / tree type / age. Pool development with riffles. Food planting / grasses, tree, bushes.
Quantity or Quality of Habitat	On-going	<ul style="list-style-type: none"> Determine of mitigation needs, sites. Species affected. Alternative ideas. investigate potential to assist wind developers with selecting a mitigation project
Quantity or Quality of Habitat	On-going	<ul style="list-style-type: none"> Focus areas include Lower Swale, LK – Goldendale section, canyon section (Below Olson Road), 3-CK section, Rock Creek (MOU with EKCD), Luna Gulch.
Quantity or Quality of Habitat	On-going	<ul style="list-style-type: none"> Assist affected landowners with getting information out to them, documenting desired outcomes, and coordinating adjoining landowners. document successful construction projects

Priority: Weed Control & Pest Control

Measurable Goal: By Dec 2019 have a demonstrated increase in the number of land owners contacted and assisted and the related acres of improvement in weed control and pest control.

Milestones	Timeline	Actions
Identify weeds and pests	Dec 2014	<ul style="list-style-type: none"> Create the inventory and identify areas effected
Prioritize weeds based on inventory	Dec 2104	<ul style="list-style-type: none"> Contact landowners based on priority species Awareness and education activities to promote prevention
Implement a control plan	Spring 2015	<ul style="list-style-type: none"> Measurable reduction in weeds
Monitoring	From 2015 – on-going	<ul style="list-style-type: none"> Develop & implement monitoring plan Evaluate results and adapt

Priority: Funding & District Operations

Measurable Goal: By Dec 2019 have a demonstrated increase in the number of people aware of district programs, diversity of the managed project, the services with landowners for implementation of conservation practices, and secure related funding to meet the goals and needs for staffing and cost share

Milestones	Timeline	Actions
Make a decision on office space for staff	April 2014	<ul style="list-style-type: none"> Analyze needs. Investigate options.
Secure stable base funding	Dec 2018	<ul style="list-style-type: none"> Public outreach and education on programs. Discussions with Commissioners. Investigate assessment v. rates and charges and determine which option is best for landowners.
Acquire conservation project funding	On-going	<ul style="list-style-type: none"> Track and pursue natural resource funding sources.
Maintain / obtain appropriate staffing levels	On-going	<ul style="list-style-type: none"> Evaluate staff efficiencies / workload and determine staffing levels required to meet workload and schedule. ID contracting / consulting alternatives for excess workload. Invest in training to expand staff competencies / capabilities and keep techs.

Staffing Needs: Shared with Eastern Klickitat Conservation District

- District Manager
- Administrative Assistant
- Technical Position #1 - water specialist
- Engineer
- Engineer Assistant
- Technical Position #2
- Information – Education (part time or include in Tech position #2)

Potential New:

- Ask current employees if they want to increase hours
 - Another engineer
 - Easement coordinator (potential to share with other districts)
 - Writing grants, mitigation proposals, real estate expertise
-

Annual Budget Needs (optional)

Annual Budget Needs

Salary & Benefits.....	\$ 316,000
Equipment.....	\$12,000
Operating Supplies.....	\$9,500
Programs & Cost Share.....	\$160,000
Building and/or Rent & Utilities.....	\$20,000
Transportation.....	\$8,000
Training & Admin Travel.....	\$13,000
Other - insurance – dues.....	\$9,800
Other ___Prof Services, advert contracted labor.....	\$38,000
Total Annual Budget Need.....	\$586,300

Key Decision Makers

- Governor
 - District Supervisors
 - Committees of state legislature
 - WSCC
 - County Commissioners
 - Each state and federal legislator
 - Agencies we work with – local, state, federal
 - WACD
 - Presidents and Executive Directors of commodity organizations
-

Use of Strategic Plan:

- Share with elected officials.
 - Base for stable funding proposals.
 - Begin process for stable funding proposals.
-

Washington Conservation Districts assisting land managers with their conservation choices



Appendix A
Natural Resource Data and Information

Eastern Klickitat CD & Central Klickitat CD County Resource Assessment

"A Starting Point"

Amanda Ettestad
NRCS District Conservationist

State Resource Assessment Background

- National direction to develop state resource assessment as a basis for funding and time allocations
- Partners and local work groups provided input from 2009-2010
- 2011 published WA NRCS SRA, Updated in 2013
- South Central LWG submits priorities based on WA NRCS SRA

South Central LWG Priorities

FY2014

EQIP funding in South Central LWG area is used for the setop priorities:

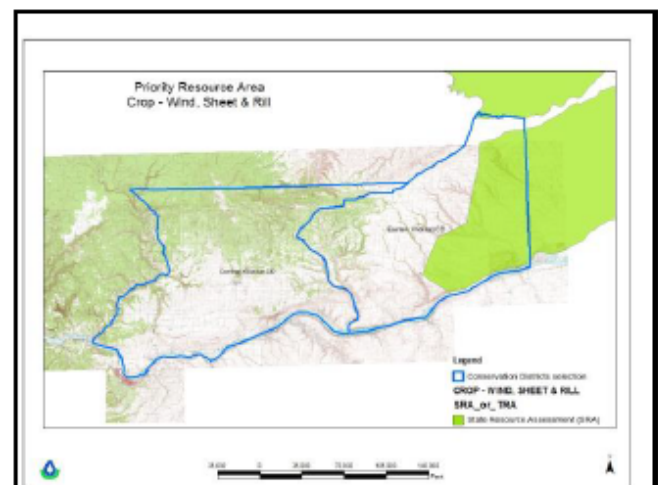
- CROP – Insufficient Water – Inefficient Use of Irrigation Water
- CROP – Soil Erosion – Sheet, Rill and Wind erosion
- PASTURE – Insufficient Water – Inefficient Use of Irrigation Water
- FOREST – Degraded Plant Condition – Undesirable plant productivity
- RANGE – Degraded Plant Condition – Undesirable plant productivity
- OTHER ASSOCIATED AG LAND – Water Quality Degradation – Excess Nutrients in Surface & Ground Waters

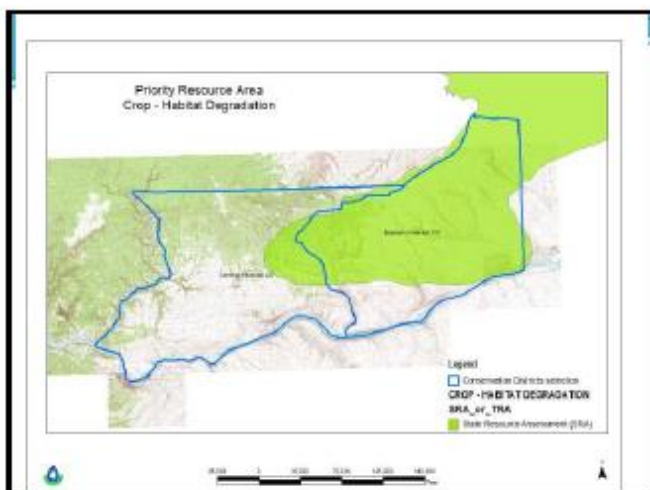
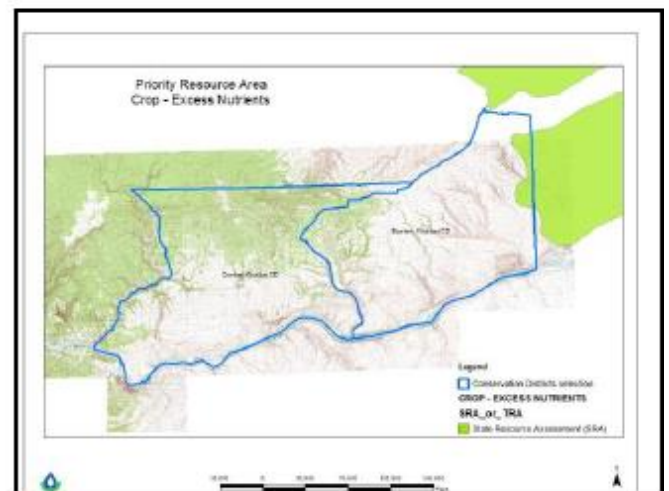
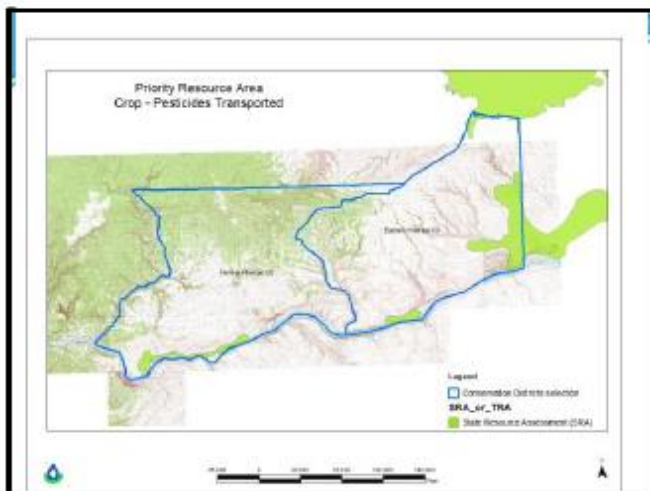
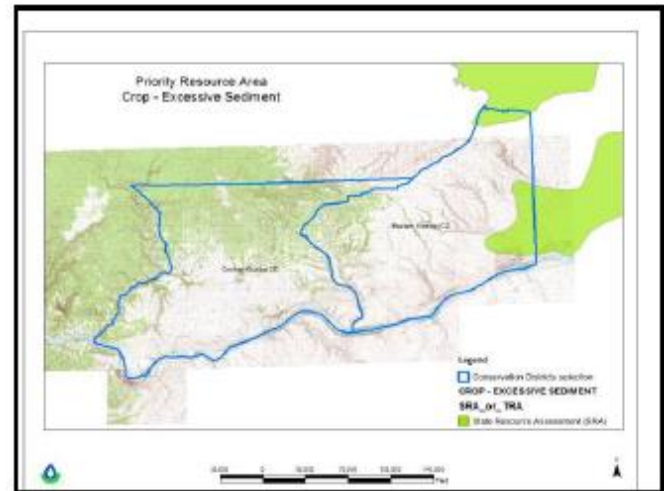
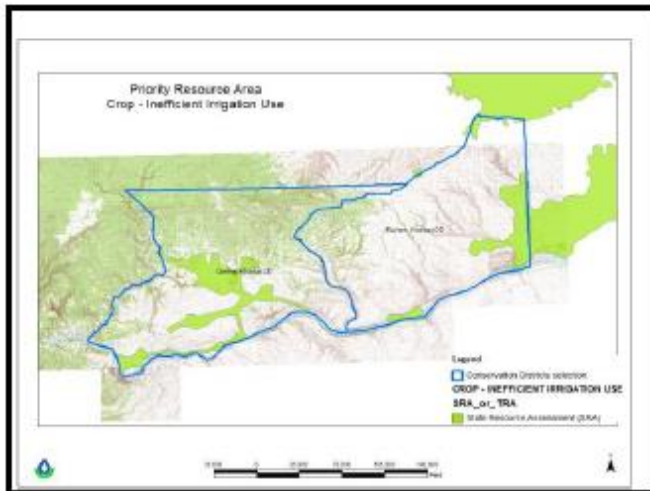
State Resource Assessment

- SRA is intended to be updated and refined as more resources are available and information is learned
- SRA can be used with partners to identify key areas where collaboration of resources can result better treatment of resource concerns and have bigger impact
- Sharing of data sets among partners can improve the SRA and make it more applicable at the local level

Resource Priority Areas occurring in Klickitat County

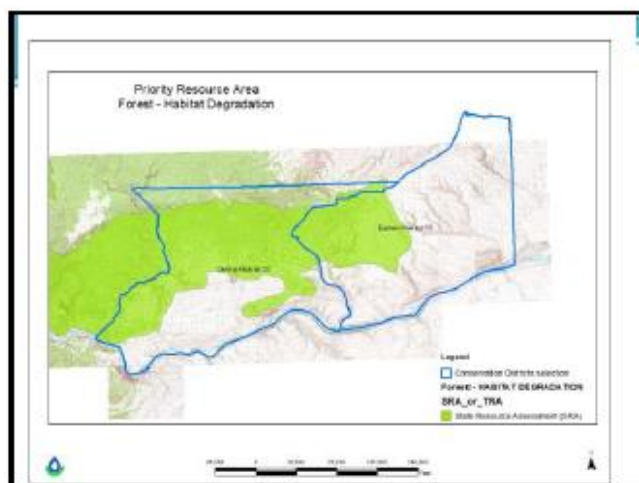
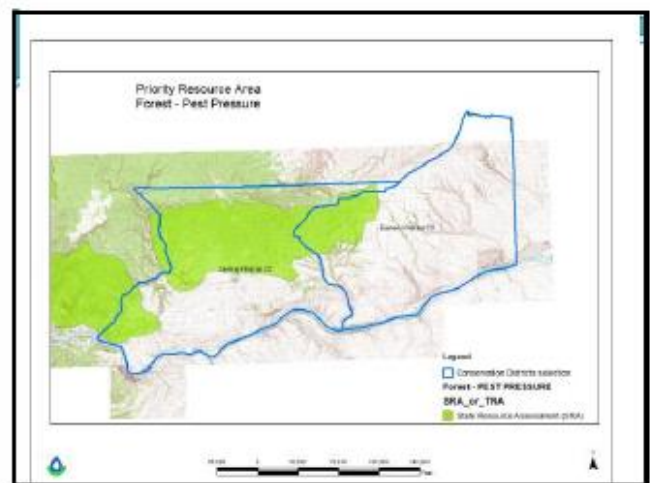
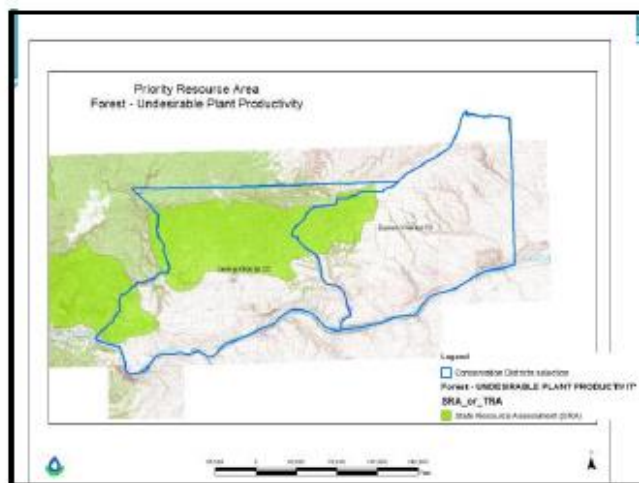
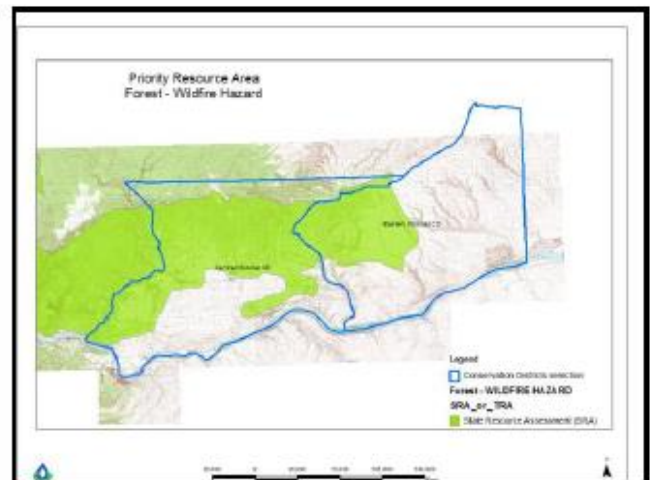
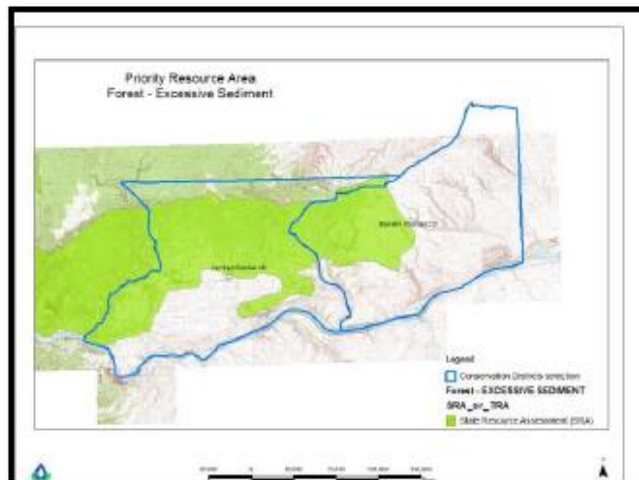
- Crop – Wind, Sheet and Rill Erosion
- Crop – Inefficient Irrigation Use
- Crop – Excessive Sediment
- Crop – Pesticides Transported
- Crop – Excess Nutrients





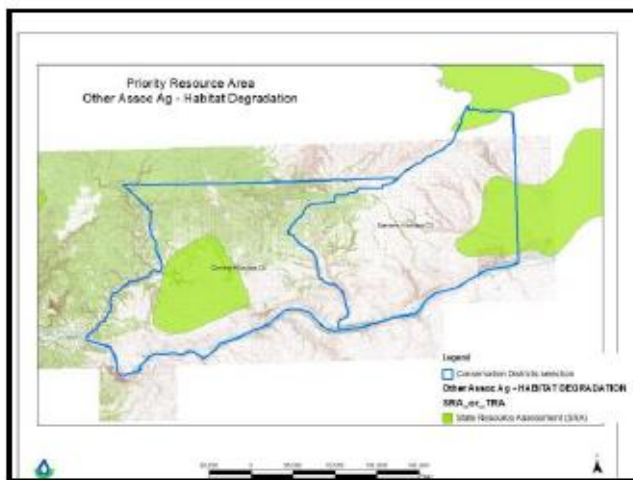
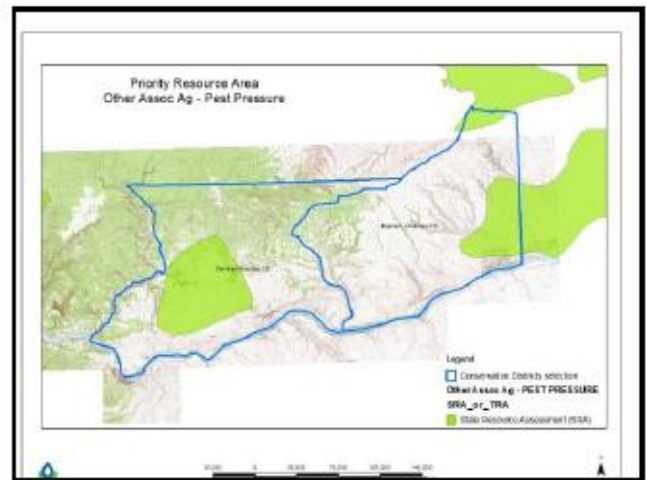
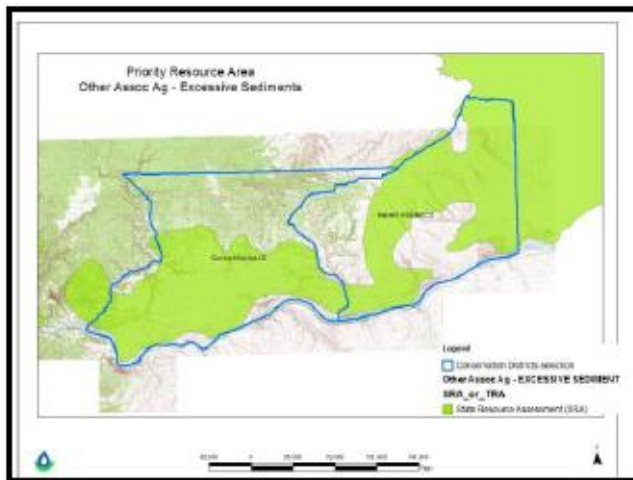
Resource Priority Areas occurring in Klickitat County

- Forest – Excessive Sediment
- Forest – Wildfire Hazard
- Forest – Undesirable Plant Productivity
- Forest – Pest Pressure
- Forest – Habitat Degradation



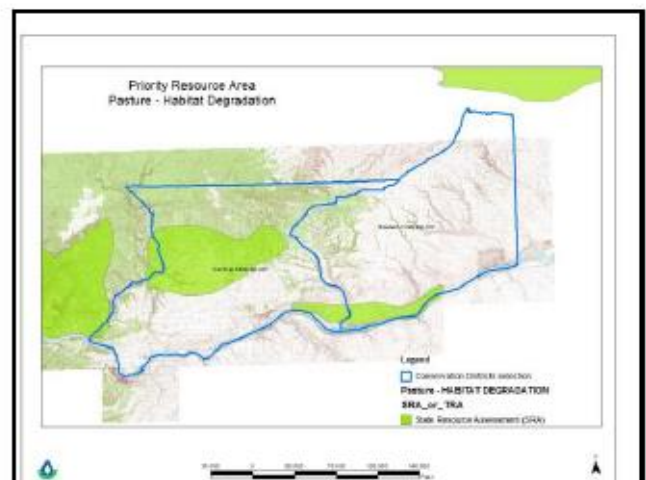
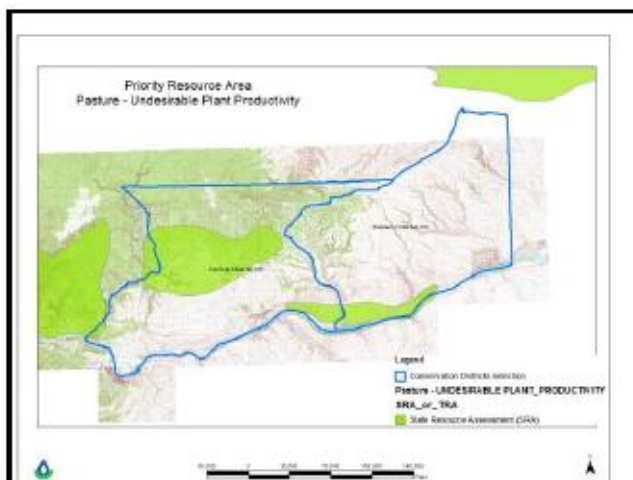
Resource Priority Areas occurring in Klickitat County

- Other Associated Ag Land – Excessive Sediment
- Other Associated Ag Land – Pest Pressure
- Other Associated Ag Land – Habitat Degradation



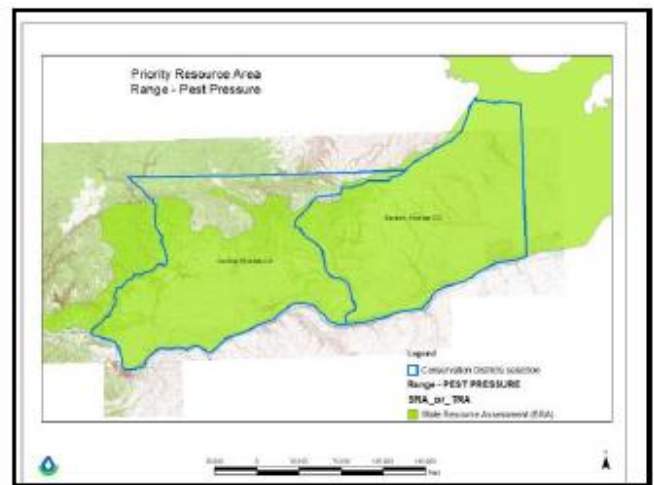
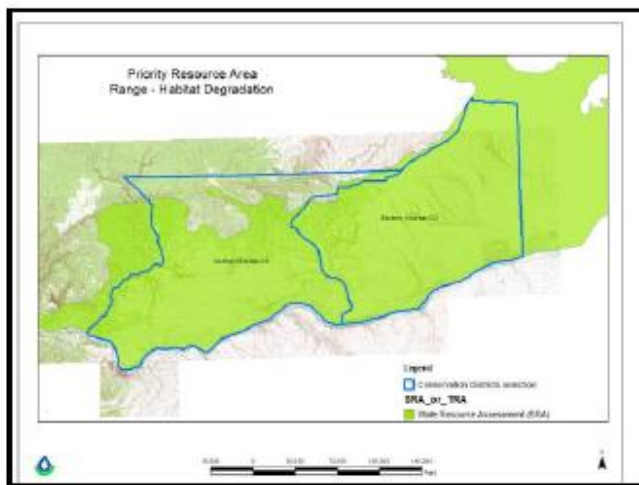
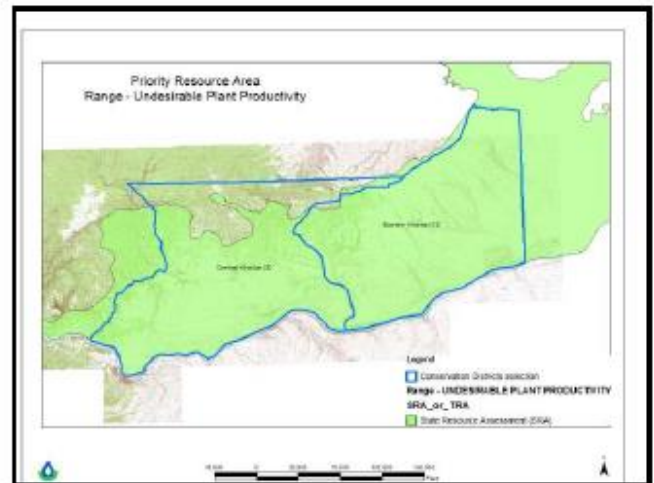
Resource Priority Areas occurring in Klickitat County

- Pasture – Undesirable Plant Productivity
- Pasture – Habitat Degradation



Resource Priority Areas occurring in Klickitat County

- Range – Undesirable Plant Productivity
- Range – Habitat Degradation
- Range – Pest Pressure



Appendix B Critical Geographic Areas

